

St. Bonifacius Memorial Park

Meeting Minutes

July 7, 2018 9:00am

Fred Keller opened the meeting at 9:05am. Members present: Fred Keller-SBACDG, Vern Schwalbe-Legion, Carolyn Brooks-Lions, Allen Hudinsky-Legion, Steve Thurk-KC, W Jay Gregg-Historical Society

It was noted that representatives from the JC's and the St Boni Sportsman Club were not present.

1-Restoration of Electrical Service – Fred talked with Jeff Gothman and it was determined that a separate service be established. This is in the City's court and they have been discussing it.

2-Establishing an account with the City to Fund Park Projects – the City Council will be voting on this at the meeting on 7-18.

3-Don Logelin Shelter- this is a Lions project that is currently in limbo. Lions are discussing what to do, the condition is bad and they are looking at repairing or replacing.

4-Memorial Park Play Area – via the City's Park Tour, the City has determined some equipment to be unsafe and is replacing it. This will come from the City Park Budget and our group does not need to be involved in this.

5-Patio, Legion and Sportsman's Club – (see attachment #5) Vern from Legion presented a drawing of the patio area and costs associated with. There was discussion on the thickness of the cement from 4" to 5". Vern suggested the 5" thickness as it lasts longer and is more consistent and is typically what is poured. Cost of cement is \$175/yard. Approximately \$10,000 in cement and \$2,000 in labor. The attachment does not include labor prices. If the City assists with the machinery it will save money. This is done to scale. Vern also stated that Holiday might purchase tables as we currently have one and the diagram shows a total of 3.

6-Paver Walkway – (see attachment #6) \$9,000 was the quote received by Joe Lemmerman. This is using cement pavers and does not include the Gazebo. The Lions will look in to Gazebo styles and prices as we get closer.

7-Rain Garden – Don Heywood, this is the smaller of the 2 ponds. Don has been in touch with someone who referred him to the Master Water Stewards and they will work with us. This could be a wetland issue and we need to determine if this is indeed on City land. The thought of a fountain had been discussed. This could be an expensive item. Carolyn will determine who owns this land.

8-Run-Off Pond – Don Heywood, this is the larger of the 2 ponds.

9-Gazebo-Lions, we have discussed this earlier in the meeting.

10-2 Planting Beds – KC, Jerry Mader will talk with Superior on this item.

11-River Birch tree in NW corner – not to be done immediately, talked about the type of tree. Superior had suggested it when we initially had plans drawn up. This item will most likely be purchased by someone in memoriam of someone; the tree could be picked out by the donator/purchaser.

12-Location/Height of Sign – JC's. Pat will raise the sign to the top of the columns. The sign has generated conversation and it was noted the sign was not intended to be the official City sign. We decided to have it set at the top and revisit it afterwards.

13-Memorial Plaques – Historical Society, Jay Gregg was volunteered as they have access to the history. Bronze, brass or ? Size? What to say? Vern noted that he did the Missile Park Plaque. The group agreed to let Jay decide what size, etc. Jay will investigate this and report back to the group at the next meeting.

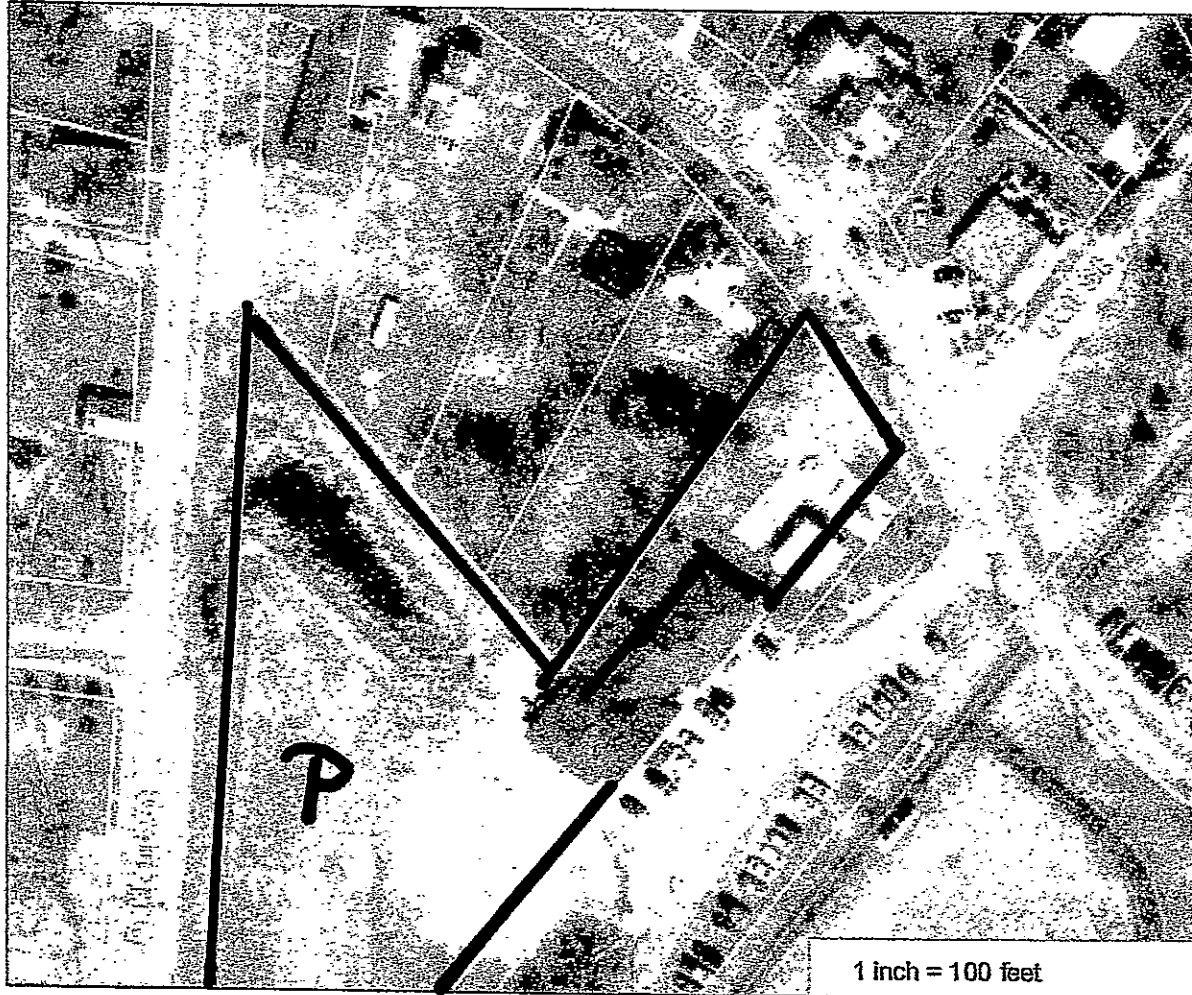
Discussion centered around day/time of the meetings as we had low turnout. Consensus was Saturday morning was chosen as most had evening plans. Agreement that Saturday at 9am was working for those who attended. We will ask this question of those not present to see if there is a better time for all to come together.

Next Meeting – August 4th at 9am



Hennepin County Property Map

Date: 7/7/2018



PARCEL ID: 3211724220075

OWNER NAME: City Of St Bonifacius

PARCEL ADDRESS: 8535 Kennedy Memorial Dr,
St. Bonifacius MN 55375

PARCEL AREA: 1.56 acres, 67,978 sq ft

A-T-B: Abstract

SALE PRICE:

SALE DATA:

SALE CODE:

ASSESSED 2017, PAYABLE 2018

PROPERTY TYPE: Commercial-Preferred

HOMESTEAD: Non-Homestead

MARKET VALUE: \$0

TAX TOTAL: \$0.00

ASSESSED 2018, PAYABLE 2019

PROPERTY TYPE: Commercial-preferred

HOMESTEAD: Non-homestead

MARKET VALUE: \$0

Comments:

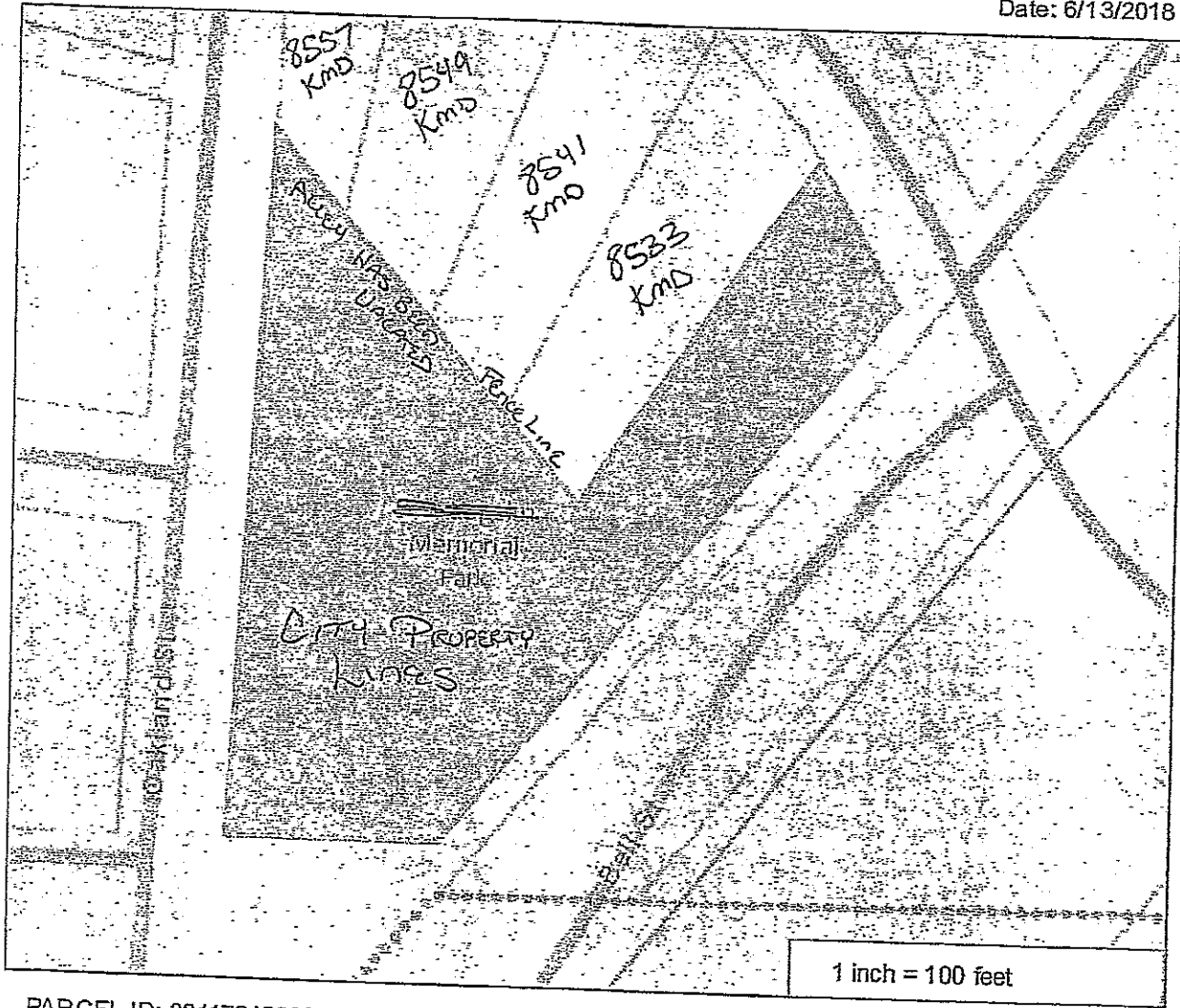
This data (i) is furnished 'AS IS' with no representation as to completeness or accuracy; (ii) is furnished with no warranty of any kind; and (iii) is not suitable for legal, engineering or surveying purposes. Hennepin County shall not be liable for any damage, injury or loss resulting from this data.

COPYRIGHT © HENNEPIN
COUNTY 2018



Hennepin County Property Map

Date: 6/13/2018



PARCEL ID: 3211724220075

OWNER NAME: City Of St Bonifacius

PARCEL ADDRESS: 8535 Kennedy Memorial Dr,
St. Bonifacius MN 55375

PARCEL AREA: 1.56 acres, 67,978 sq ft

A-T-B: Abstract

SALE PRICE:

SALE DATA:

SALE CODE:

ASSESSED 2017, PAYABLE 2018

PROPERTY TYPE: Commercial-Preferred

HOMESTEAD: Non-Homestead

MARKET VALUE: \$0

TAX TOTAL: \$0.00

ASSESSED 2018, PAYABLE 2019

PROPERTY TYPE: Commercial-preferred

HOMESTEAD: Non-homestead

MARKET VALUE: \$0

Comments:

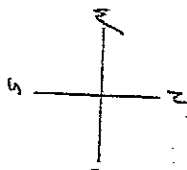
This data (i) is furnished 'AS IS' with no representation as to completeness or accuracy; (ii) is furnished with no warranty of any kind; and (iii) is not suitable for legal, engineering or surveying purposes. Hennepin County shall not be liable for any damage, injury or loss resulting from this data.

COPYRIGHT © HENNEPIN COUNTY 2018

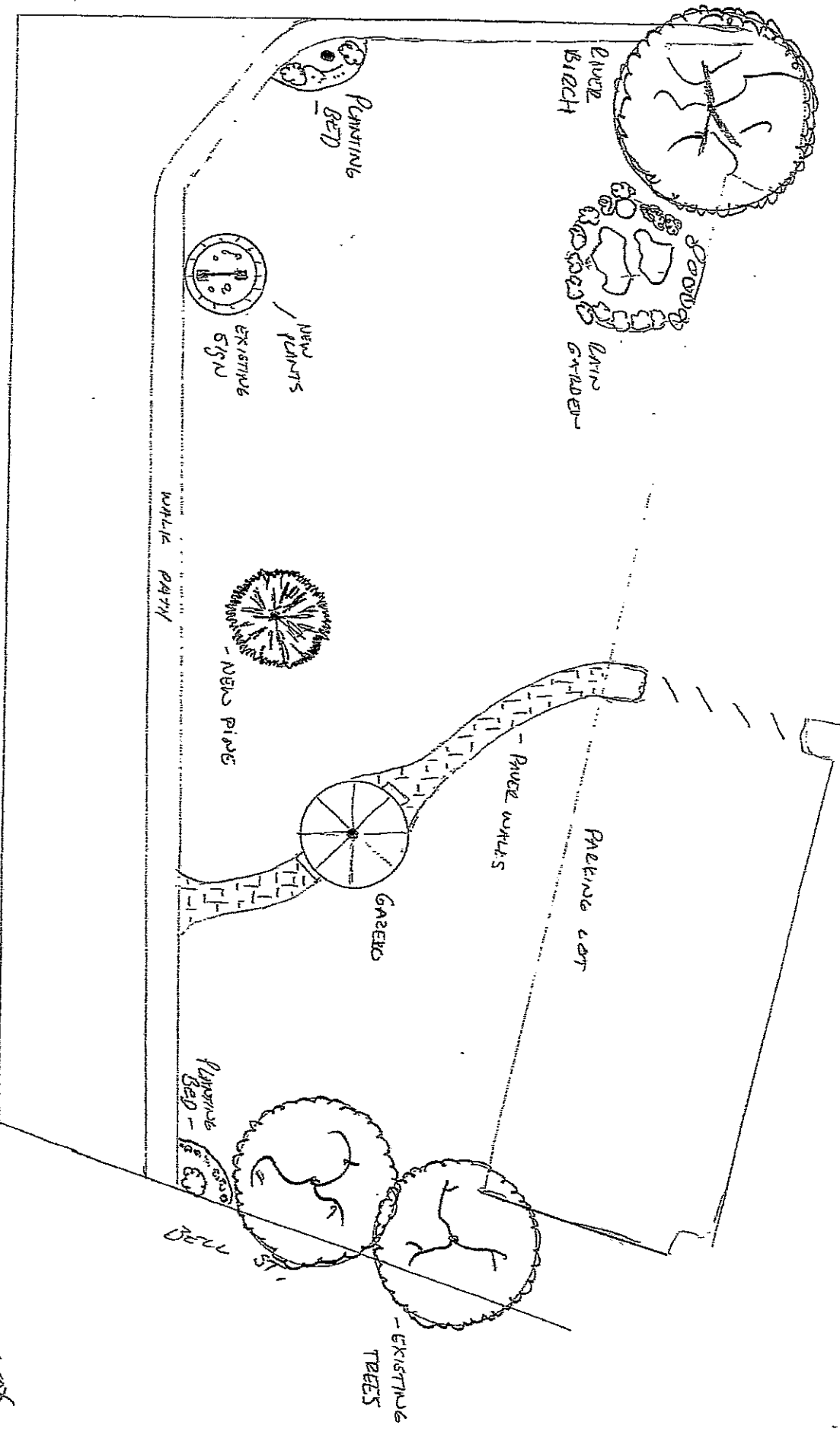
Legion.
AW 2100

view north
ST. BOUFIAC

CITY HALL



OAKLAND ST.



1908

Attachment #6

TRAIL

170000'S
ALL RIGHTS RESERVED

OFFICE PHONE
PARK

ADD FENCES
AND RESTROOMS
AND COMMENTS

PROPER GRADE

18" KNOXES

2500000/4000

7 FT WIDE

PARKING

OUT

